

LAT-Map™



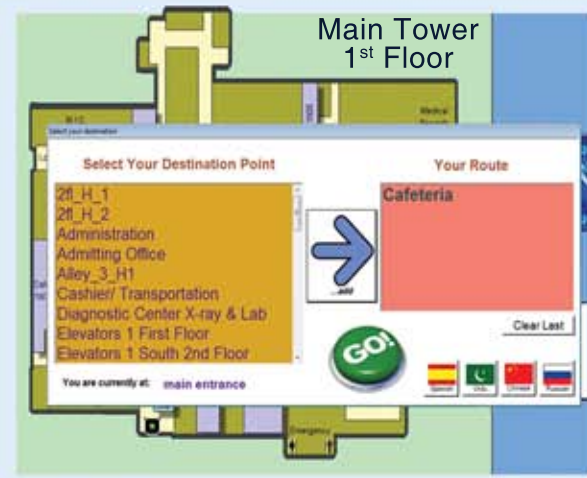
LAT-MAP™ is a comprehensive platform designed to dynamically guide visitors to your key destinations while enriching their experience visiting your facility.

Dynamically generated maps along with simple guidance instructions, in any language of user's choice, are presented to the user alongside descriptions and photos. Your visitors are efficiently guided (based on your rules) throughout the facility while simultaneously being educated on its special capabilities and uniqueness.

Printed maps further aid in user satisfaction,

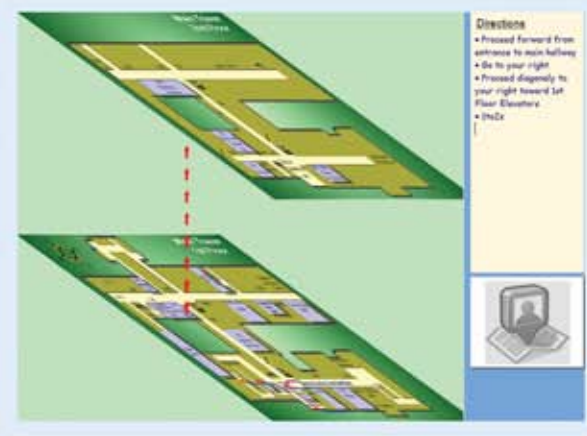


- Reach multi-lingual demographic
- Dynamically generated paths based on your rules
- Minimize staff involvement
- Educate visitors using dynamic photos, descriptions ...etc.,
- Numerous modes to market and highlight your facility
- Unlimited destination points
- Improve HCAHPS or other hospital satisfaction surveys
- Remotely track usage, determine hot-spots and more
- Generate printed navigation maps
- Numerous Expansion Capabilities
- Flexible licensing
- Clear safety instructions for emergencies



while presenting yet another "canvas" for messaging.

Various options, such as emergency modes, WiFi, Mobile (coming soon), ...etc., dramatically enhance user satisfaction and experience while minimizing staff involvement.



LAT
www.LATcorp.com

P 856.566.4121
F 856.346.9099
LATMAP@latcorp.com



FEATURES

- LAT-Map™ engine dynamically calculates paths in real-time, based on your rules and restrictions
- Virtually unlimited number of active points; add / edit / delete at any time. For example: "Hallway R1 is closed due to spillage, re-route everyone around it"
- Additional floor maps / buildings can be added at any time
- On-the-screen "hot-spots" for instant location awareness. Includes descriptions (in any user requested language) and location-specific photos
- For each destination point, actual pictures and or short video can be shown to familiarise user with actual destination look and orientation points even before actual way-map generated
- On-screen, customer-defined dynamic directions guiding users from point-to-point, to a floor, via elevators ...etc.,
- Multiple language are supported, more can be added anytime
- Multiple modes of operation:
 - **Stand-Alone:** this is designed for user-facing, kiosk based applications
 - **Staff Mode:** this is designed to be run on staff computers, minimized of the way when not in use
 - **Mobile:** coming soon
- On-screen live browser available during idle times to provide an additional marketing message to educate and inform
- Detailed statistics on usage, what paths taken and when are available for each LAT-Map™ client
- Add-ons capabilities, such as: Facilities guide, Patient Lookup, Reservations, Queues ...etc., can be easily added
- Generated guidance maps can be printed, in a number of ways, even in user-selected language!
- Send map and direction instructions to user smart phones or other devices (coming soon)
- Emergency operation modes automatically guide to nearest exit.
- Designed with the latest .NET technology

CONFIGURATION

The LAT-Map™ is designed as an engine capable of being configured to use whatever resources are available. With the use of the supplied LAT-Map™ Manager software, the engine can be configured to handle virtually unlimited number of location maps, floors, buildings, points of interest, location photos and more. Languages, just like visual resources, are dynamic and easily added. The entire system can be molded and shaped to fit customer requirements and current and future needs. Either as a stand alone, staff modes or a mixture, LAT-Map™ is the solution to enhance the visitor experience in any venue.

EXPANSION OPTIONS

Even though LAT-Map™ is a complete system ready to be implemented right out of the box, there are a number of expansion options and capabilities that are available to "grow" the system even more. Due to its modular design, LAT-Map™ can be easily expanded to provide interactive digital signage functionality during 'idle' modes. In fact, operation during idle modes is already enhanced with a built-in browser to pull information in from the web. Advanced enhanced digital signage capabilities, such as awareness of user proximity are available as well. In addition, LAT-Map™ can be easily expanded to include position-sensitive marketing and/or advertising messaging.

Barcode, RFID and/or QR codes expansion are available as well to allow visitors to be able to check-in/check-out at desired locations. Integration with visitor management systems, to allow patient lookup for example, are easily allowed. Bottom line: The LAT-Map™ is designed to fit your current needs, and also to grow with you to accommodate future requirements.

LAT-Map™



PRICING OPTIONS

Unlike "traditional" systems, due to its modular design, LAT-Map™ is not priced based on predefined destination points. Instead, LAT-Map™ is priced based on a number of live installations of the engine, with the number of active points maps loosely falling into the following tiers:

Number of LAT-Map™ Engine Installations:

	Tier A	Tier B	Tier C
Active Points Up To	10	45	?
Active Maps Up To	4	10	?

Contact LAT to get a quote generated for your particular configuration.

Kiosk (Optional)

If you decide to run LAT-Map™ in a kiosk mode, LAT carries a number of kiosk models with various options, modes, form factors, colors and finishes. Please contact LAT with your unique requirements to fit the right model for you.

Maximum Specifications

Max. Numbers of floors	255
Max. Numbers of buildings	255
Max. Number of Active Points	1500
Max. Number of Points	5000
Max. Foreign Languages Supported	255
Max. Client Stations/Kiosks	Unlimited
Max. Number of Photos Supported	Unlimited

Implementation Plan...

Definition

- Define Capabilities
- Define Scope (# of POI, Licenses...)

Database Creation

- Map Creation / POI definition
- Paths Creation
- Language build-up

Installation / Training

- System Installation
- On-Site Training
- Remote Training

Support

- System Upgrades
- Remote Support
- Continuous Process